

## **SUCTION ACCESSORIES**



# SUCTION ACCESSORIES



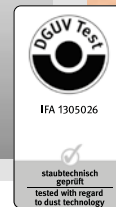
To properly benefit from and utilize a functionally flawless extraction system, it is important that all of the components in the system match perfectly. Thus, we offer an extensive line of accessories that are specially designed for different purposes of use in the dental laboratory and the industry and which are fitted to perfectly match the suction systems of Zubler.

## R1200 Suction Funnel

The R1200 plug-in suction funnel is suitable for all common rectangular tubes with an inside dimension of 75 x 25 mm. It is extremely quiet and suitable for almost all kinds of work.

The attachment of the safety glass with two knurled screws makes it easy to exchange it. Also different safety glass sizes are available.

**Item No.: 825/241**



## R1250 Suction Funnel

The R1250 suction funnel is designed for delicate work with a small, articulating safety glass shield for the ceramic/precious metals department. The R1260 gold filter, which can be easily exchanged, inserts into the R1250 suction funnel for the capture of gold particles.

**Item No.: 825/236**



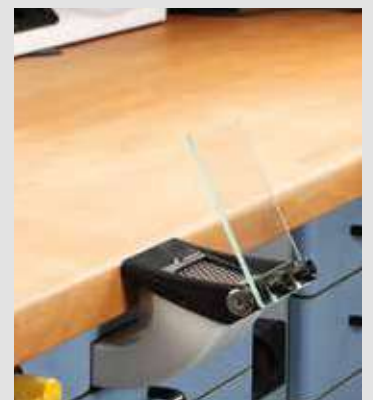
## R1251 Suction Funnel

The R1251 suction funnel is similar to the R1250 suction funnel, but with an exchangeable safety glass shield attached with two knurled screws.

Also here different glass sizes are available.

The exchangeable R1260 gold filter can as well be used with the R1251 to capture gold particles.

**Item No.: 825/2360**



## R1260 Gold Filter

The R1260 uses fine filtration mesh screens for catching gold at the source. Suitable for use with R1250 & R1251 suction funnels, this gold filter system can be inserted easily.

**Item No.: 825/234**



## SH1 Suction Funnel

The SH1 mobile suction funnel can be used without permanent installation on any desktop. The heavy base plate with non-slip rubberized padding can be used in any position on the table. The large shield protects the eyes from debris of bursting blades or tools and ensures a good efficiency of extraction at the point of origin of the dust. (ØNW36)

**Item No.: 802/0035**



## Safety Glass Panels

Our standard sizes range from 87 x 128 mm, 140 x 190 mm, up to 200 x 250 mm and are designed for mounting with 2 screws at a distance of 44 mm.

**87 x 128 mm - Item No.: 557/179**

**140 x 190 mm - Item No.: 557/172**

**200 x 250 mm - Item No.: 557/171**



## R1000 Rectangular Pipe

The R1000 with an inner dimension of 75 x 25 mm and a length of 415 mm was designed for use with most dental furniture. The special geometry of its inner channel reduces noise by air turbulences already to a minimum. The hose connection is available in diameters of 36 mm or 40 mm.

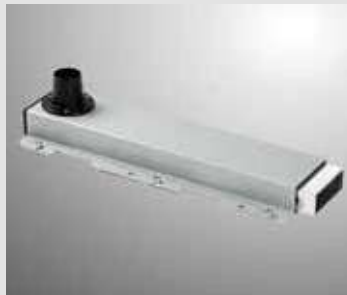
**Item No.: 570/065**



## R1300 Extendable Rectangular Pipe

The R1300 extendable rectangular pipe features an inner-diameter of 75 x 25 mm, a length of 426 mm and is suitable for many common dental benches. The rectangular pipe can be extended by 110 mm to allow work in front of the bench. The hose connection is available in diameters of 36 mm or 40 mm.

**Item No.: 825/228**



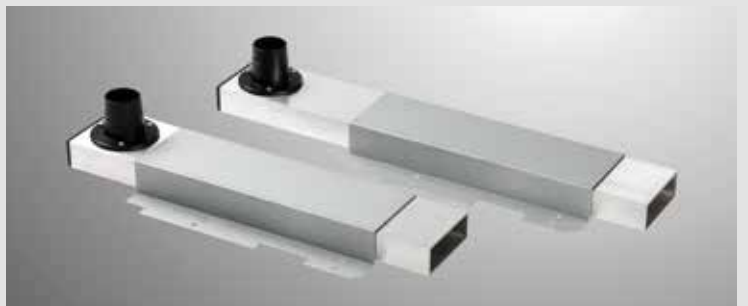
## Rectangular Tubes in Special Lengths

Should the R1000 or R1300 rectangular pipes not fit your bench or your needs, we do offer tubes in special lengths, available starting with order quantities as low as one single piece.

**R1000 S - Item No.: 570/0657**

**R1300 S - Item No.: 825/228S**

Please always specify the desired length in mm from front to middle.



## R1100 Rectangular Silencer

The R1100 rectangular tube silencer fits all standard rectangular tubes with an inside dimension of 75 mm x 25 mm and a minimum length of 415 mm. Reduces suction noise immediately after the suction funnel, to achieve the highest possible noise reduction.

**Item No.: 825/2615**



## R1101 Round Silencer

The R1101 round silencer is suitable for suction tubes with an inside diameter of 36 mm and 40 mm. The circular silencer is incorporated directly into the tube path to significantly reduce the exhaust noise.

**Item No.: 825/282**



## R1500 Exhaust Hood

Investing and divesting produce extremely hazardous dust. The R1500 adjustable exhaust hood can be mounted on the table or wall (wall mount available) and positioned for optimal extraction using the adjustable arm.

**Item No.: 825/273**

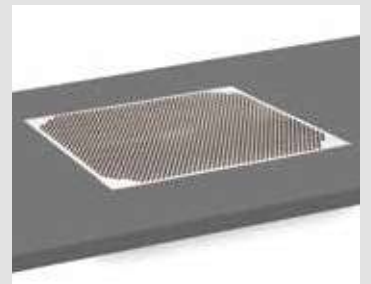
**Item No.: 570/2301 (wall bracket)**



## R1600 Stationary Monomer Bath

When installed in a tabletop, the monomer bath R1600 creates a comfortable, stationary working environment for mixing plastics.

**Item No.: 825/230**



## R1601 Mobile Monomer Bath

Similar to the R1600 but movable from station to station with R1000 or R1300 rectangular suction ports. Simply remove the existing suction funnel and install the R1601 mobile monomer bath.

**Item No.: 825/229**





## S1 Pre-Separator

Blasting sand sent into the pipes of a suction system has a destructive effect. The wall thickness of hoses and pipes can diminish over time, especially at reducers and arcs, to the point of producing a hole. Blasting sand should be caught directly at the source before it enters the pipes.

The S1 pre-separator is designed for connection of up to three sandblasters and uses a bucket for easy removal of the used sand.

**Item No.: 825/267**



## Pre-Separator (small)

Using the same principle as the S1 pre-separator, it is designed for connection of only one sandblaster.

**Item No.: 825/2671**



## R3000/R3002 Bench Insertion with operating module

The Zubler module can easily be inserted into the existing suction drawer support frame of the KaVo „ERGOspace“ line of benches, and the existing suction funnel can still be used.

**R3000 - Item No.: 822/0650**

**in combination with AP600/AP601**

**R3002 - Item No.: 822/0652 for Z1-series**



## R3001 Bench Insertion without operating module

The Zubler module can easily be inserted into the existing suction drawer support frame of the KaVo „ERGOspace“ line of benches, and the existing suction funnel can still be used.

**R3001**

**- Item No.: 822/0651**



## AP600 CENTRAL - Suction port opener

The AP600 is the suction port opener for all common grinding devices. The sensitivity can be calibrated automatically or manually. The AP600 is also used for all laboratory equipment up to 1000 W and is therefore one of the most flexible and highest quality controllers for suction ports on the working place.

**Item No.: 822/0600 for FZ VARIO**



## AP600-A/AP601 Suction port opener for Multi Suction Units

The AP600-A/AP 601 is the suction port opener for all common grinding devices. The sensitivity can be calibrated automatically or manually. The AP600-A/AP 601 is also used for all laboratory equipment up to 1000 W and is therefore one of the most flexible and highest quality controllers for suction ports on the working place.

**AP600-A - Item No.: 822/0611 for FZ1 & FZ2**

**AP601 - Item No.: 822/0610 for Z2**



## AP600-R/AP601-R Suction Port Openers for Milling Machines

The AP600-R is designed as a suction port opener for all common CAM milling machines with a switching output of 24 Volt. Furthermore, it functions to transmit data signals to FZ VARIO suction systems for milling operations outside of normal operating hours. Please always specify the type of CAM milling machine when ordering. For further details please refer to the listed on page 9.

**Item No.: 822/0615**



## Operating module / operating unit for suction unit

### COMPACT VERSION

- Item No.: 822/0641 for AP600 & AP600-A

**BUILT-IN VERSION for wooden front panel**

- Item No.: 822/0642 for AP600 & AP600-A



## ST02 Suction Socket-Outlet

ST02 suction socket-outlets can be mounted in the particular areas of the laboratory. Cleaning accessories RS1/RS2 can be utilized in conjunction with the suction system to comprehensively clean floors and workspaces quickly and conveniently throughout the laboratory. Suitable for our central suction systems.

**Item No.: 825/2750**



## ST03 Suction Socket-Outlet

Similar to the ST02, the ST03 adds the convenience of a reed sensor that starts the suction when the suction socket-outlet is opened. Suitable for single suction units with data interface and multi-suction systems FZ1 & FZ2.

**Item No.: 825/2752**



## RS-1 Cleaning Set

Designed for cleaning workspaces and equipment area. The RS-1 consists of a 1.8 meter suction hose, a workplace brush and a crevice tool.

**Item No.: 825/490**



## RS-2 Cleaning Set

Designed for cleaning floors, workspaces and equipment area. The RS-2 consists of a 5 meter suction hose, a floor nozzle, a workplace brush and a crevice tool.

**Item No.: 825/497**





## R1700 Spraybox

The R1700 spray box was designed to draw away the particles from scan sprays prior to scanning. Thanks to its unique design, the box allows the user to achieve optimal angle and movement, combined with an efficient suction power. The connection of the hose is available in 36 mm or 40 mm diameters.

**Item No.: 825/223**



## INTERFACE CABLES FOR MILLING MACHINES AND GRINDING DEVICES

### KaVo data cable for connecting:

KaVo K-Control grinding systems

**Item No.: 825/256L**

KaVo TLC grinding systems

**Item No.: 825/R56SL12**



### SL-Qube data cable

for connecting Schick  
Qube grinding systems

**Item No.: 825/25648**



### 24 Volt Schnittstellenkabel

4-pole round plug  
for VHF

**Item No.: 825/25610**



### 24 Volt interface cable

open  
end

**Item No.: 825/25614**



### 24 Volt interface cable

Round plug 6-pole  
for VHF

**Item No.: 825/25611**



### 24 Volt interface cable

D-SUB 15-pin  
for Sirona milling machines

**Item No.: 825/25615**



### 24 Volt interface cable

D-SUB 9-pole  
for Amann-Girrbach

**Item No.: 825/25612**



### 24 Volt interface cable

D-SUB 9-pole  
for imes-icore

**Item No.: 825/25616**



### 24 Volt interface cable

Jack plug  
for Roland DG

**Item No.: 825/25613**



### 230 Volt interface

C14  
for ZirkonZahn

**Item No.: 825/2565L**



# SUCTION AND COMPRESSED AIR HOSES



## Suction Hose

Internal diameter 36 mm

Item No.: 530/001



## Compressed Air Hose

Outer diameter 8 mm

Item No.: 530/301



## Suction Hose

Internal diameter 38 mm

Item No.: 530/0112



## Compressed Air Hose

Outer diameter 6 mm

Item No.: 530/302



## Suction Hose

Internal diameter 40 mm

Item No.: 530/004



## Exhaust Hose

Internal diameter 76 mm

Item No.: 530/0110



## Suction Hose

Internal diameter 50 mm

Item No.: 530/0067



## Adapters

To connect your devices to our current suction hoses



# FILTER BAGS



As our suction systems are utilized for a variety of applications, we can offer an extensive range of different filter bags made of different materials, specifically suited for your field of application.

The possibilities of use range from plaster dust and plastic chips to laser dust.

## Filter bag

Suitable for suction systems V4010 / V4011 / Z1-AT / Z1-M10 und Z1-M11

**Item No.: 556/0035**  
**(3 - pack)**



## Filter bag (wide/white)

Suitable for suction systems V4050 / V4051 / V4250 / V4251 / Z1-M50 / Z1-M51 with wide filter door

**Item No.: 556/0063**  
**(1 ea)**  
**Item No.: 556/0063P**  
**(3 - pack)**



## Filter bag (wide/white)

Suitable for suction systems V6000 / V7000

**Item No.: 556/035C**  
**(1 ea)**  
**Item No.: 556/035CP**  
**(3 - pack)**



## Filter bag (wide/white)

Suitable for suction systems Z1 ECO / Z1 CAM

**Item No.: 556/040**  
**(1 ea)**  
**Item No.: 556/040P**  
**(3 - pack)**



# FILTER CARTRIDGES



Designed to operate with Zubler extraction systems, we offer ultra fine filter cartridges of different materials, suitable for various applications.

## Fine Filter Cartridge

**10 square meters of filter area**

Suitable for:

FZ10 / FZ20 / FZ30 / EF10

suction systems

**Item No.: 556/052**



## Fine Filter Cartridge

**5 square meters of filter area**

Suitable for:

FZ5 / FZ5/2 / EF5

suction systems

**Item No.: 556/062**



## Fine Filter Cartridge

Suitable for:

FZ2 VARIOmatic

suction system

**Item No.: 556/034**



## Safety Filter

Suitable for:

FZ2 VARIOmatic

suction system

**Item No.: 556/071**



## Fine Filter Cartridge

Suitable for

suction system

FZ1 / Z2

**Item No.: 556/038**



## Safety Filter

Suitable for

suction system

FZ1 / Z2

**Item No.: 556/039**



## Fine Filter Cartridge

Suitable for  
suction systems  
V4000-series / V5000 /  
V6000 / V7000 / Z1-M series

**Item No.: 556/019**



## Activated Carbon Filter

Suitable for  
suction systems  
V4000-series / V5000 /  
Z1-M series

**Item No.: 556/0041**



## Fine Filter Cartridge

Suitable for  
suction system  
Z1-AT

**Item No.: 556/0034**



## Activated Carbon Filter

Suitable for suction system  
Z1-AT

**Item No.: 556/004**



## Fine Filter Cartridge

Suitable for  
suction systems  
Z1 ECO / Z1 CAM

**Item No.: 556/0053**



## Activated Carbon Filter

Suitable for  
suction systems  
V6000 / V7000

**Item No.: 556/0046**



## Fine Filter Cartridge

Suitable for  
suction systems  
Z1 ECO PRO / Z1 CAM PRO

**Item No.: 556/0054**



## Activated Carbon Filter

Suitable for suction systems  
Z1 ECO / Z1 ECO PRO /  
Z1 CAM / Z1 CAM PRO

**Item No.: 556/0051**



## Abluftfilter Diffusor

passend für Absauganlagen  
Z1 ECO / Z1 ECO PRO /  
Z1 CAM / Z1 CAM PRO

**Item No.: 556/0055**



## Exhaust Filter Filter grade H14 for dust grade H for devices

Suitable for suction systems  
Z1 ECO / Z1 ECO PRO /  
Z1 CAM / Z1 CAM PRO

**Item No.: 556/0052**



## Activated Carbon Refill Pack

Suitable for suction systems  
V4000-series / V5000 /  
Z1-M series

**Item No.: 556/0042**

suction system Z1-AT

**Item No.: 556/0043**

suction systems V6000 / V7000

**Item No.: 556/0049**

suction systems Z1 ECO / Z1 ECO PRO /  
Z1 CAM / Z1 CAM PRO

**Item No.: 556/0056**





# AV1000 Preparation Box

In dental technology, perfect working basis is a requirement for high-quality dental prosthetics, whereby the preparation of the work has an important function. In order to optimize the integration of this working step into the process, we have developed the AV 1000 preparation box and placed great importance on ergonomics and cleanliness in the working room. The integrated blow-off nozzle, operated by a foot switch, cleans working models from grinding dust and pressed ceramics of investment material residues. The swivel glass, available with or without dust protection slats, reduces the dust contamination in the laboratory working area to a minimum.

**AV1000** - Item No.: 825/311 with dust protection slats

**AV1000** - Item No.: 825/310 without dust protection slats

**Protective glass with lamellas** - Item No.: 825/322

**FG1000** (base frame) - Item No.: 825/324

**Mounting plate for pedestal** - Item No.: 825/323

## Lighting

The work preparation box is equipped as standard with an LED lighting system and thus achieves an illumination similar to daylight.

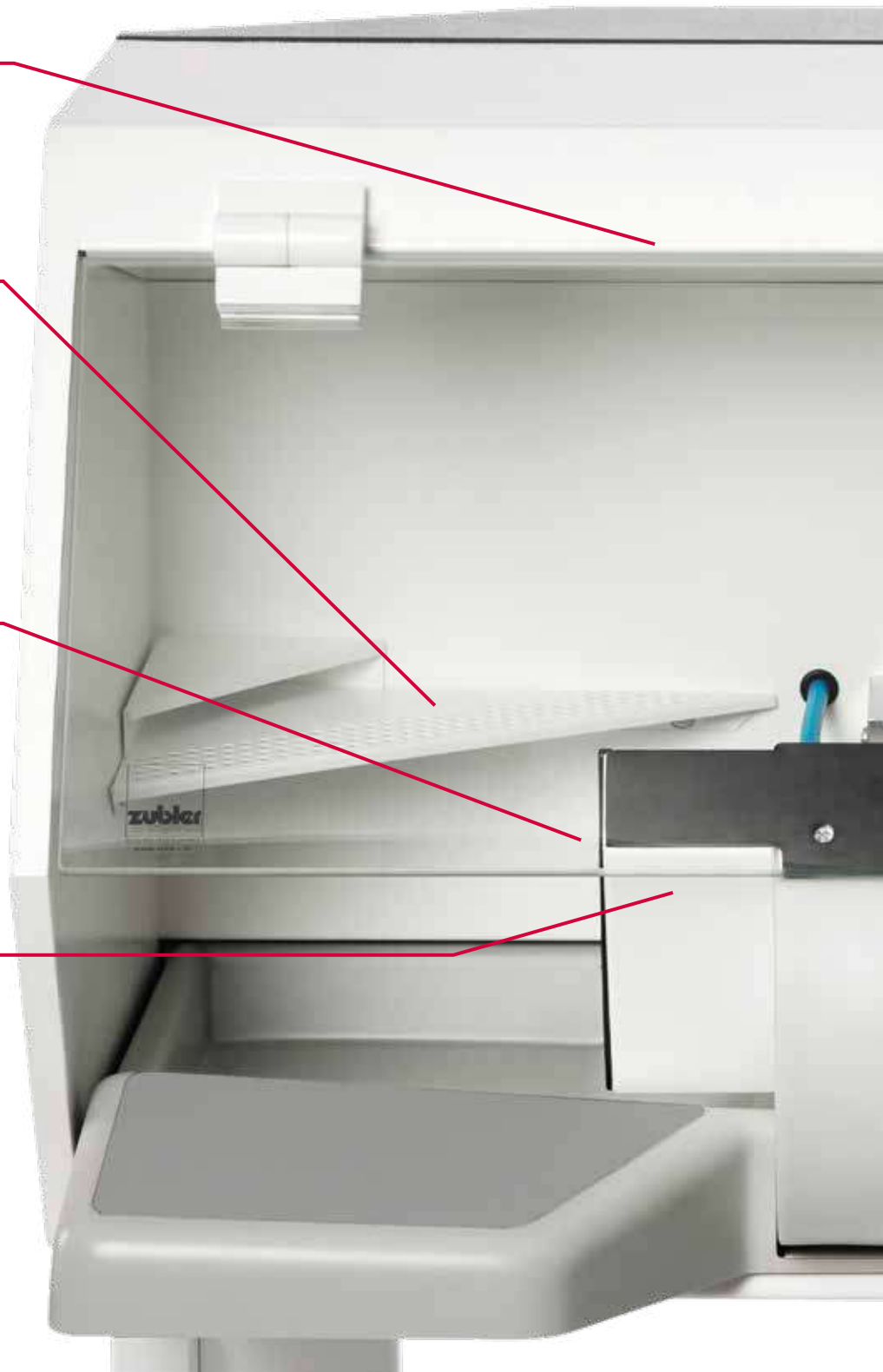
## Storage for Workpieces and Rotary



## Air Nozzle



## Suction Funnel



## Technical data:

# AV1000

Dimensions: (width x height x depth):

630 x 430 x 580 mm

Weight:

26 kg

Required compressed air connection:

minimum 3 bar

### **VARIO**star handpiece

*Especially suitable for  
dust-intensive work*  
(not included in the delivery)

### **Universal**

Suitable for all  
common handpieces

### **Easy to clean**

Protective glass and work block can  
be pivoted upward and away.  
After removing the funnel,  
the drip pan can be removed  
and washed easily

### **Pedestal**

With mounting  
plate for handpiece



## MB1000 Monomer Box

In the same design as the work preparation box AV 1000, Zubler offers a monomer box that is suitable for exhausting toxic fumes that arise while mixing plastic monomer. The vapors in the box are pulled downward, and will be suctioned through the grid-like pad directly into the suction system. Please note that an extraction system with activated carbon filter or a central suction system should be used to exhaust air outside of the building or facility.

**MB1000** - Item No.: 825/315

**FG1000** (pedestal) - Item No.: 825/324

**Folding Protective Glass**



**Large Suction Area**

**Technical data:**

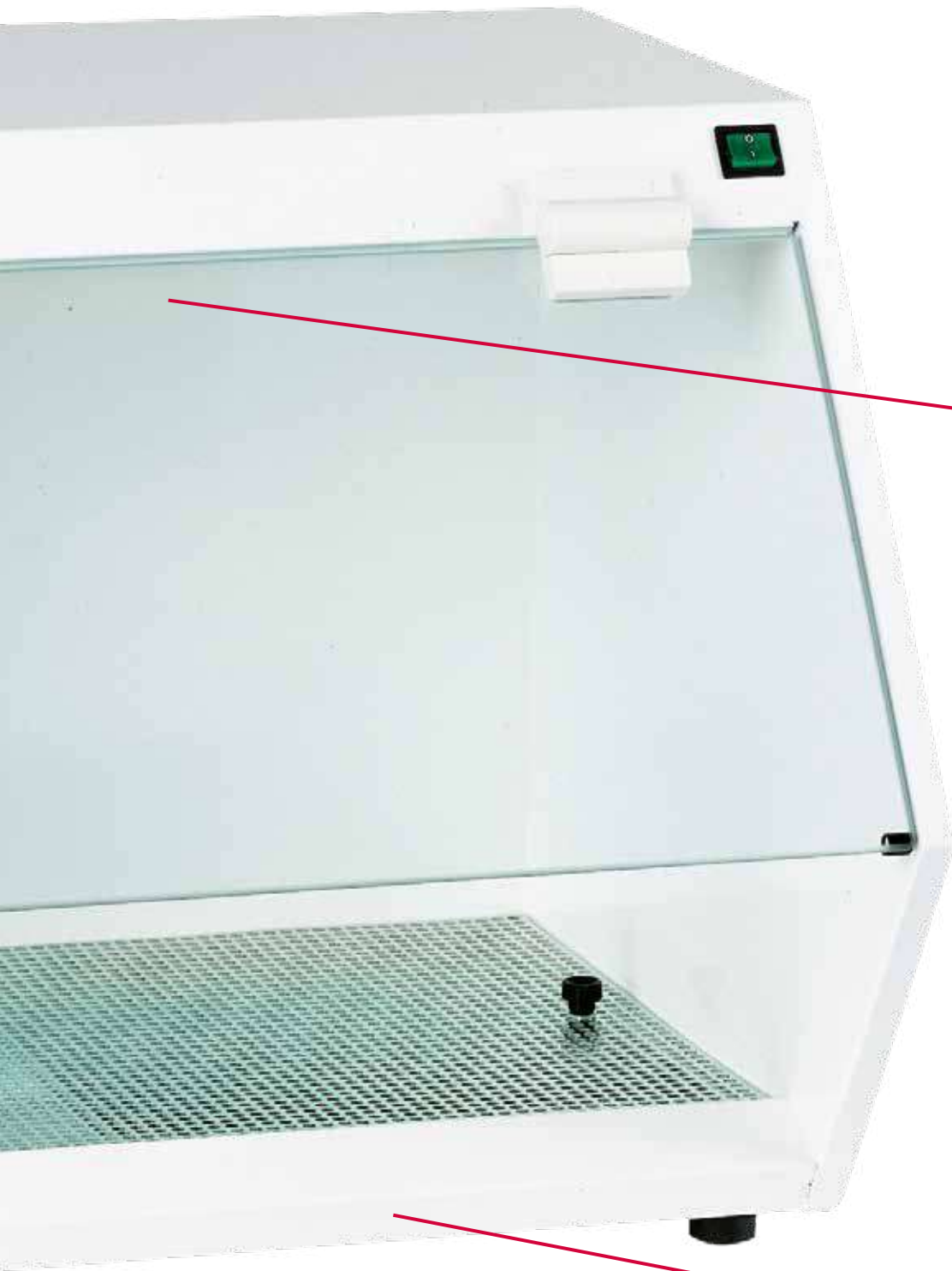
**MB1000**

Dimensions: (width x height x depth):

630 x 460 x 420 mm

Weight:

18 kg



**Integrated  
LED lighting**

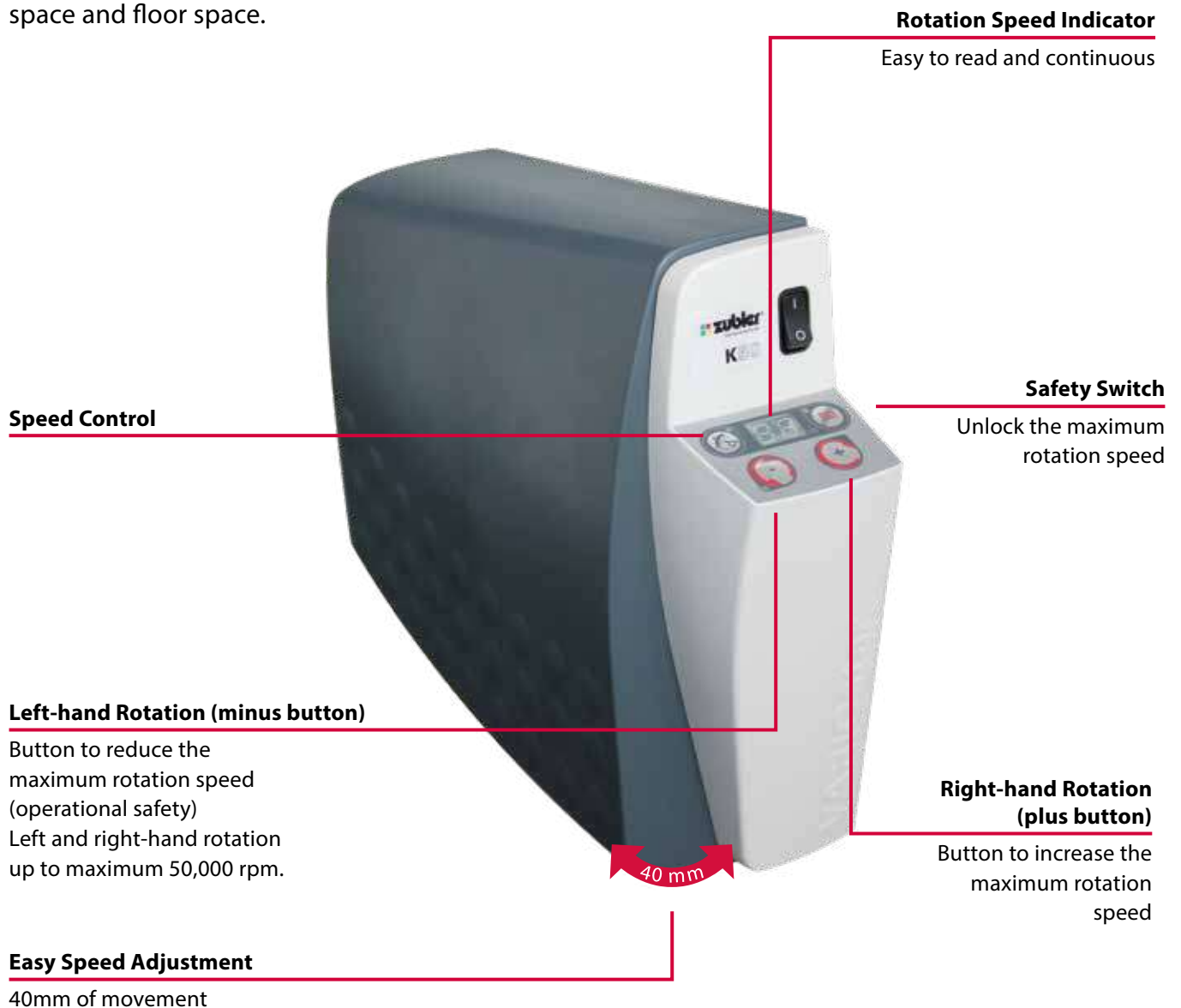
**Stable Housing**

# VARIOstar K50

## Knee Control Unit



The new knee device included with Zubler's VARIOstar K50 combines the main control panel and knee pedal into a single assembly. Perfect for everyday laboratory work, this configuration saves counter space and floor space.



### Rotation Speed Indicator

Easy to read and continuous

### Safety Switch

Unlock the maximum rotation speed

### Right-hand Rotation (plus button)

Button to increase the maximum rotation speed

### Speed Control

### Left-hand Rotation (minus button)

Button to reduce the maximum rotation speed (operational safety)  
Left and right-hand rotation up to maximum 50,000 rpm.

### Easy Speed Adjustment

40mm of movement



# VARIOstar T50

Tabletop control unit



Handpiece stand  
with digital speed display

## System-Variants:

804 - 3112 (220 V - 240 V) 804 - 3111 (115 V)

### VARIOstar K50

Knee control unit

Contains:

- 804 - 3012 Knee control unit 220 V - 240 V
- 804 - 3011 Knee control unit 115 V
- 804 - 3002 Handpiece with chuck Ø 2,35 mm



804 - 3152 (220 V - 240 V) 804 - 3151 (115 V)

### VARIOstar T50

Tabletop unit with Foot pedal

Contains:

- 804 - 3052 Tabletop control unit 220 V - 240 V
- 804 - 3051 Tabletop control unit 115 V
- 804 - 3002 Handpiece with chuck Ø 2,35 mm
- 804 - 1016 Foot pedal



804 - 3162 (220 V - 240 V) 804 - 3161 (115 V)

### VARIOstar T50

Tabletop unit with Foot control lever left/right

Contains:

- 804 - 3052 Tabletop control unit 220 V - 240 V
- 804 - 3051 Tabletop control unit 115 V
- 804 - 3002 Handpiece with chuck Ø 2,35 mm
- 804 - 1015 Foot control lever



804 - 3172 (220 V - 240 V) 804 - 3171 (115 V)

### VARIOstar T50

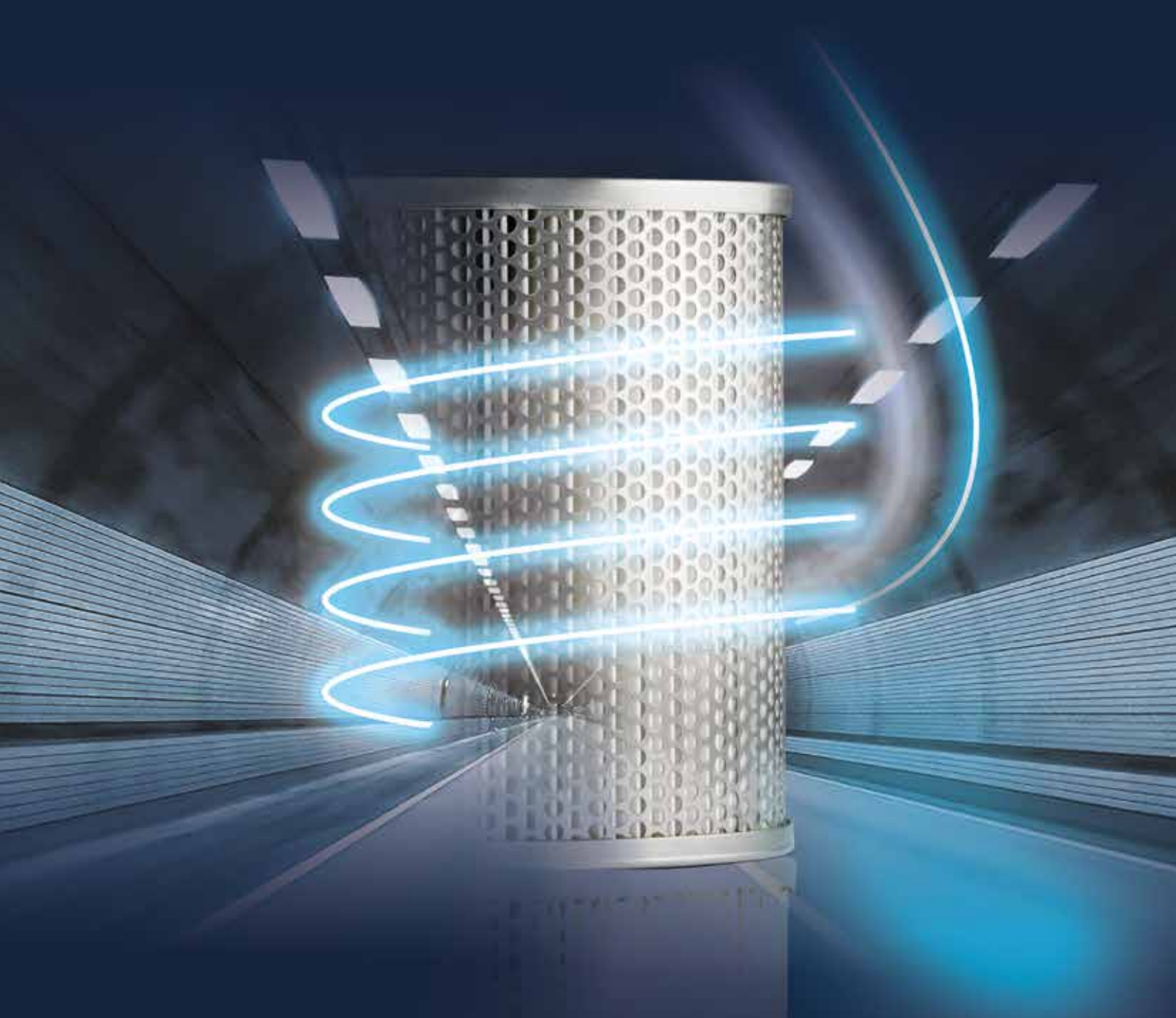
Tabletop unit with Knee pedal

Contains:

- 804 - 3052 Tabletop control unit 220 V - 240 V
- 804 - 3051 Tabletop control unit 115 V
- 804 - 3002 Handpiece with chuck Ø 2,35 mm
- 804 - 1017 Knee pedal (left/right mountable)



All systems include a tool for changing the collet chuck, a handpiece holder and operating instructions.



Zubler Gerätebau GmbH  
Buchbrunnenweg 26  
D - 89081 Ulm-Jungingen

Tel.: + 49 (0) 731 - 14 52 0  
Fax: + 49 (0) 731 - 14 52 13  
[www.zubler.de](http://www.zubler.de)



Distributed by: